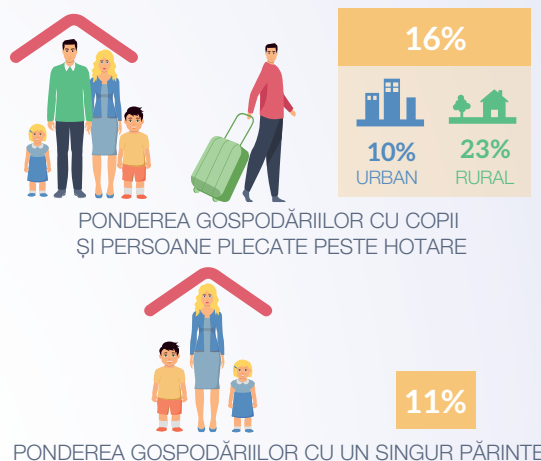
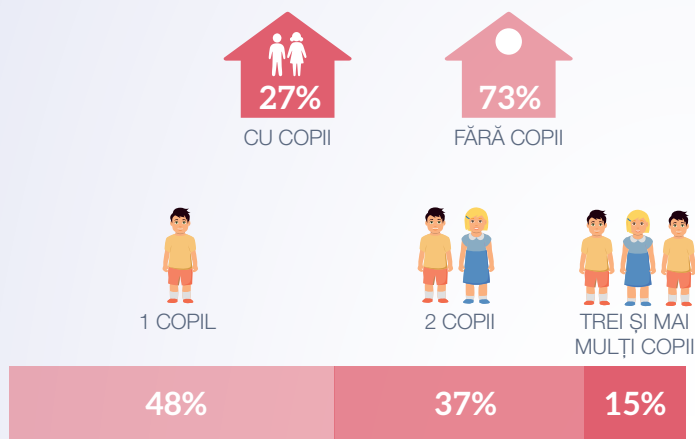


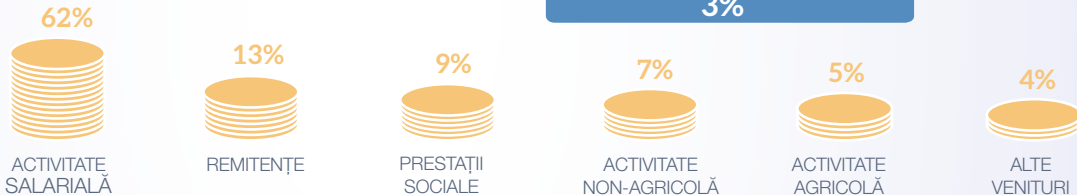
Familia și copilul*

Principalele caracteristici ale gospodăriilor cu copii, în 2024



Structura veniturilor gospodăriilor cu copii, în 2024

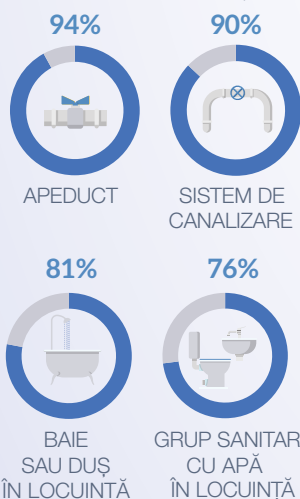
Veniturile disponibile pe o persoană din cadrul gospodăriilor cu copii a constituit **4597,1 lei** (lunar)



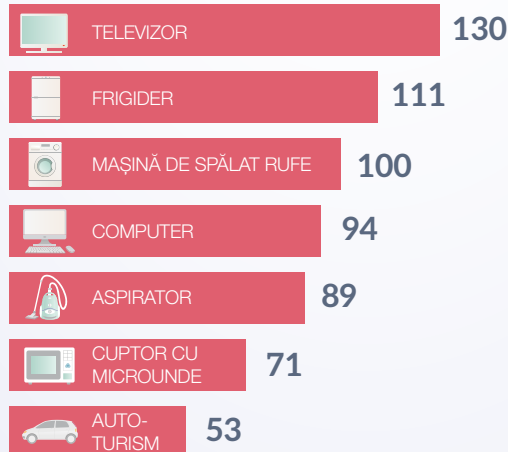
Contribuția indemnizațiilor pentru copii în total venituri este de **3%**

Nivelul de dotare a gospodăriilor cu copii, în 2024

PONDEREA GOSPODĂRIILOR CU COPII CU ACCES LA UTILITĂȚI

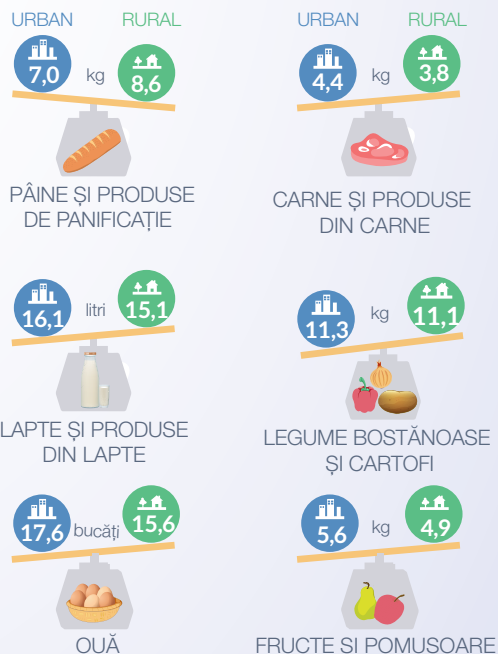


BUNURI DE FOLOSINȚĂ DURABILĂ bucăți la 100 gospodării cu copii

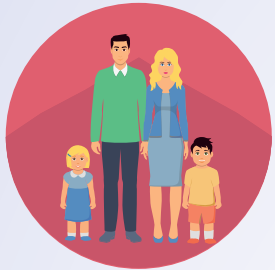


Rația alimentară pe medii, în 2024

lunar, pentru o persoană



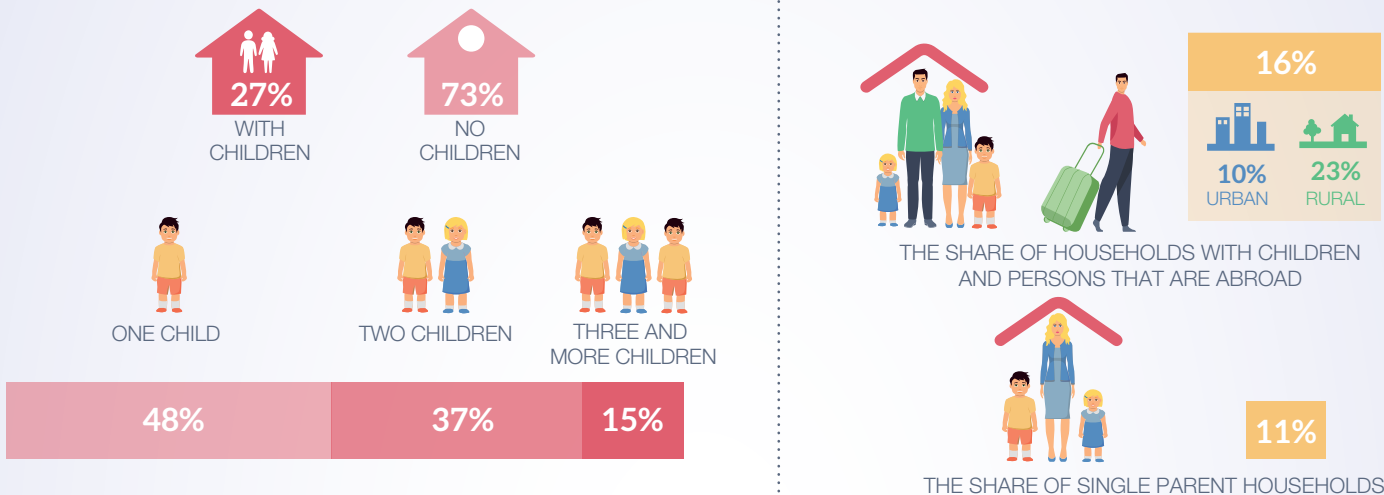
* Informația este prezentată fără datele raioanelor din partea stângă a Nistrului și mun. Bender.
Sursa datelor: Cercetarea Bugetelor Gospodăriilor Casnice (CBGC).



Family and children*

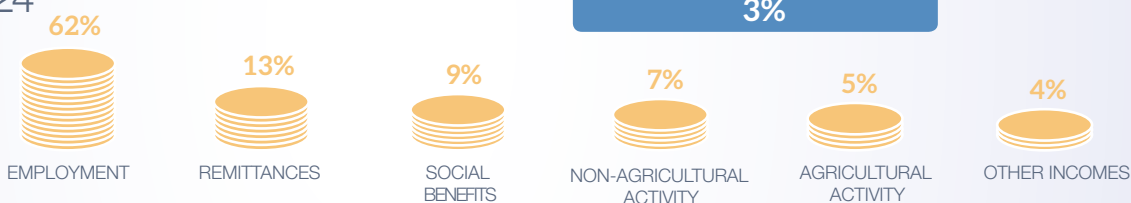


Main characteristics of households with children, in 2024



Structure of incomes of households with children, in 2024

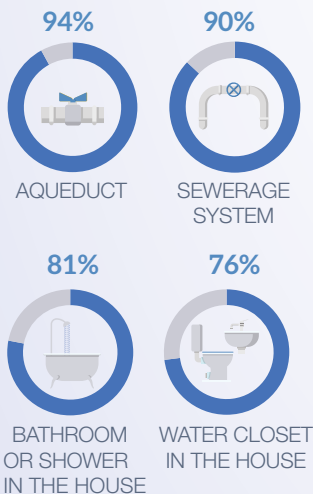
The disposable income per person, in the households with children, accounted **4597.1 lei** monthly



The contribution of children allowances in total income is **3%**

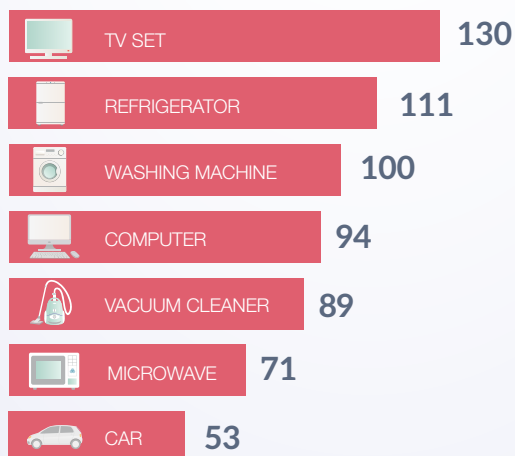
Assets owned by households with Children, in 2024

THE SHARE OF HOUSEHOLDS WITH CHILDREN WITH ACCESS TO FACILITIES



MAIN DURABLE GOODS

units per 100 household with children



Food ration by area, in 2024

monthly per person



* The information is presented without the data on districts from the left side of the river Nistru and municipality Bender.
Data source: Household Budget Survey (HBS).